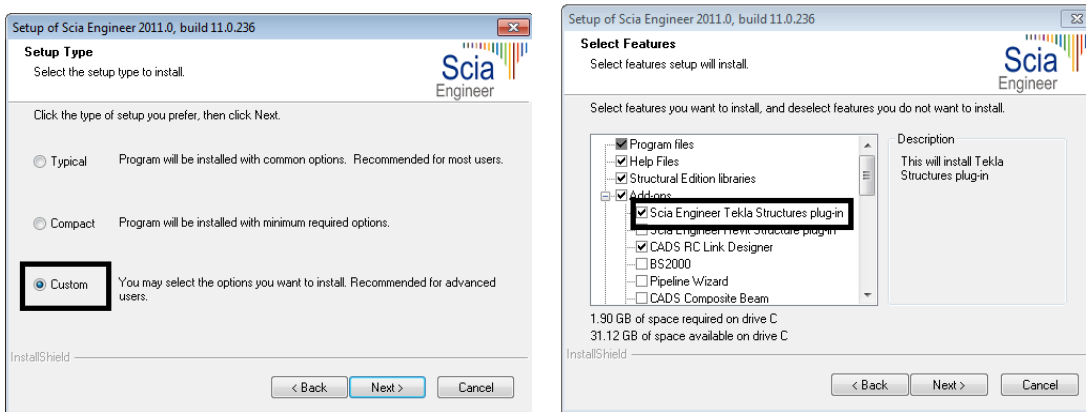


Export from Tekla Structures to Scia Engineer

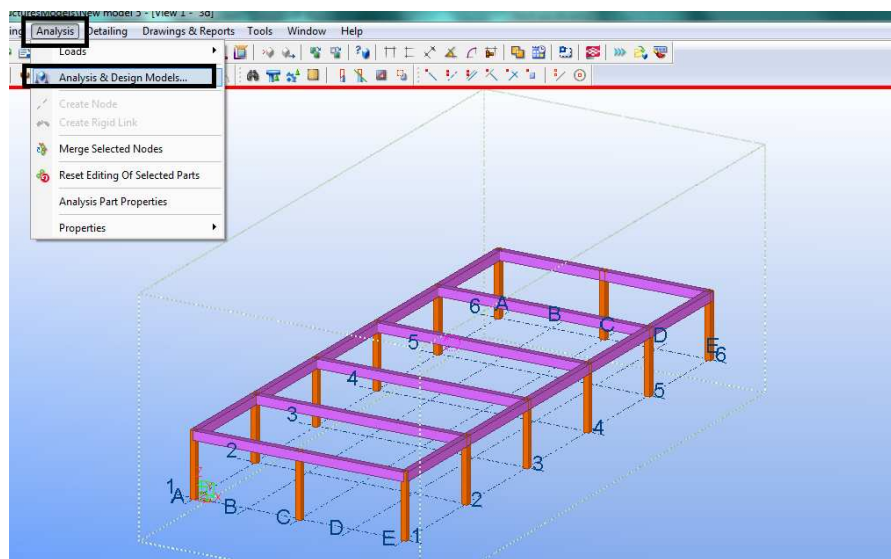
Conditions:

- You must have bought and switched on module **esa.22** (TEKLA structure interface) for export. Otherwise Scia Engineer does not offer the export.
- Firstly install **Tekla Structures** to computer where you are going to import data from **Tekla Structure** to **Scia Engineer**. Next step is to install Scia Engineer. Choose the type of installation as **Custom** and in the next dialog window switch on the box **Scia Engineer Tekla Structures plug-in** and click on the button **Next**. If **Tekla Structures** is not installed on the computer the plug-in won't be installed.

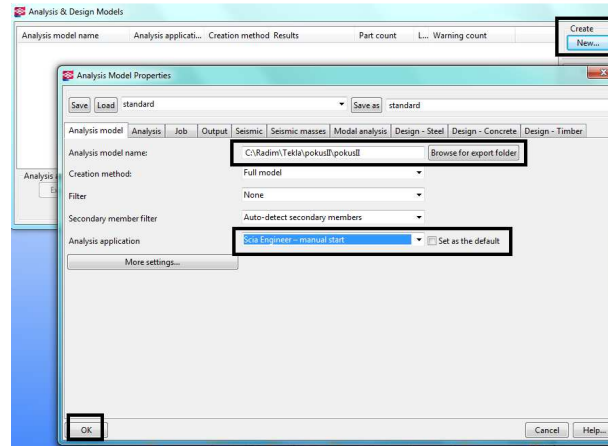


Method for export from Tekla Structures to Scia Engineer:

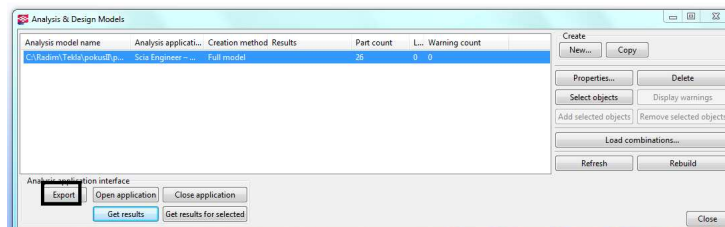
- 1) Open file for the import in **Tekla Structures** and follow instructions from pictures below.



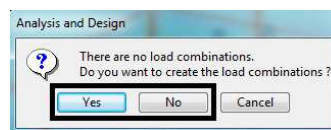
- 2) Click on button **New...** and set parameters for import. Set the option which is called Analysis application to **Scia Engineer – manual start** and set the path to file for saving. Setting is confirmed by the button **OK**.



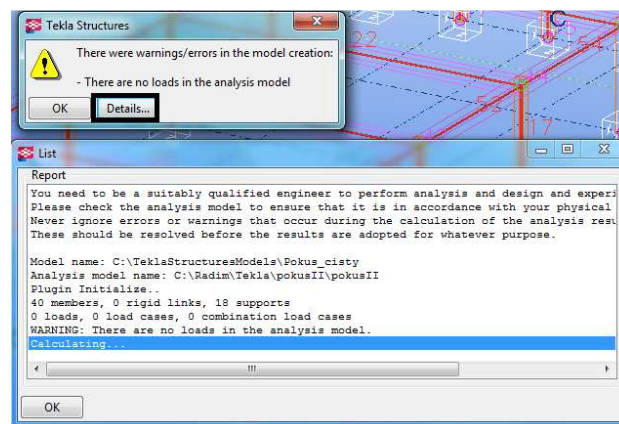
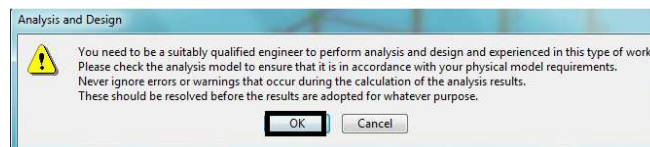
3) After setting of all parameters click on button **export**.



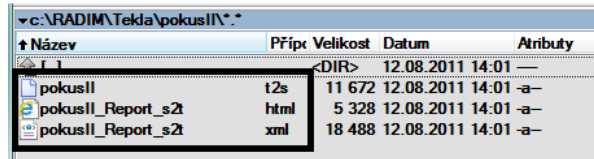
4) There is possibility to input combinations.



5) The program displays warnings and details about the export.

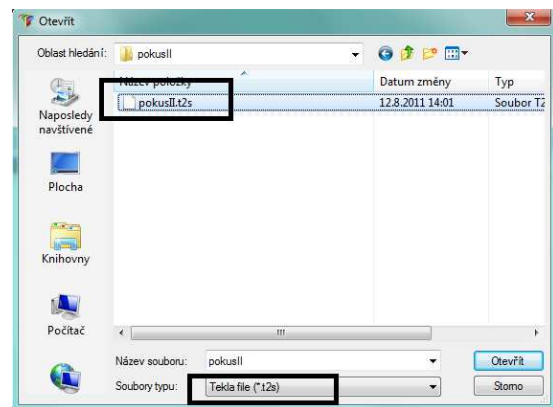
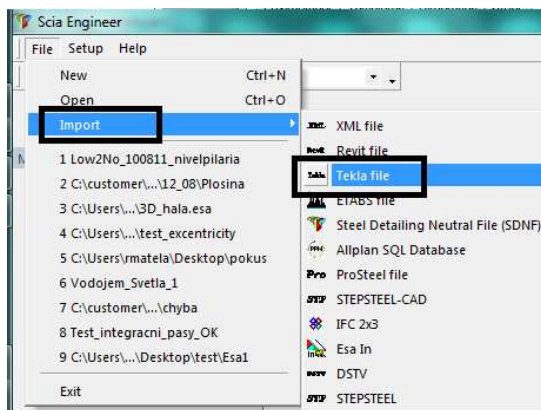


6) If the export is OK the program saves following files on pictures below. These files can be found under the path defined before.

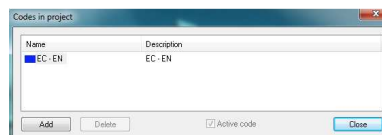


Notes:

- a) These files must be together in the same folder if you do import to Scia Engineer.
- b) These files can be sent to a colleague, who has not installed Tekla Structures but he has installed Scia Engineer. He doesn't need to install plug-in for the import. He must only switch on the module **esa.22** and after he can do the import according to steps below.
- 7) In the program Tekla Structures everything is finished concerning the export.
- 8) Open Scia Engineer and proceed according to pictures below.



- 9) Choose the code for imported project



- 10) The import is finished.

