



Standalone Installation Manual

Scia Engineer 2013

All information in this document is subject to modification without prior notice. No part of this manual may be reproduced, stored in a database or retrieval system or published, in any form or in any way, electronically, mechanically, by print, photo print, microfilm or any other means without prior written permission from the publisher. Scia is not responsible for any direct or indirect damage because of imperfections in the documentation and/or the software.

© Copyright 2013 Nemetschek Scia nv. All rights reserved.

Release: Scia Engineer 2013
 Manual: Installation Guide
 Revision: 05/2013

Nemetschek Scia Offices

Latest version is available on: <http://nemetschek-scia.com/en/contact/offices>

Belgium Headquarters

Nemetschek Scia nv
 Industrieweg 1007
 B-3540 Herk-de-Stad
 Tel.: +32 13 55 17 75
 Fax: +32 13 55 41 75
 E-mail: info@scia-online.com

Support Phone
 CAE (Scia Engineer)
 Tel: +32 13 55 09 90

CAD (Allplan)
 Tel: +32 13 55 09 80

CIM (Scia Steel, Scia Steel
 Manager)
 Tel: +32 13 55 09 70

Concrete (Precast Manager)
 Tel: +32 13 35 03 15

Support Email:
support@scia-online.com

Austria

Scia Datenservice Ges.m.b.H
 Dresdnerstrasse 68/2/6/9
 A-1200 Wien
 Tel.: +43 1 7433232-11
 Fax: +43 1 7433232-20
info@scia.at

Support
 Tel: +43 1 7433232-12
 E-mail: support@scia-online.com

Brazil

Nemetschek do Brasil
 Rua Dr. Luiz Migliano, 1896 –
 sala 702, CEP
 SP -05711-001 São Paulo
 Brasil
 Tel: +55 11 4314-5880
 E-mail: brasil@scia-online.com

Czech Republic

Nemetschek Scia s.r.o.
 Evropská 2591/33E
 160 00 Praha 6
 Tel.: +420 226 205 600
 Fax: +420 226 201 673
 E-mail: info.praha@scia.cz

Nemetschek Scia s.r.o.
 Slavickova 1a
 638 00 Brno
 Tel.: +420 530 501 570
 Fax: +420 226 201 673
 E-mail: info.brno@scia.cz

Finland

Nemetschek Scia Finland
 Linnoitustie 5
 FI-02600 ESPOO
 Tel.: +358 207 698 600
 Fax: +358 207 - 698 699
 Email: finland@scia-online.com

France

Nemetschek Scia sarl
 Centre d'Affaires
 10, Rue du Château
 FR-59100 Roubaix
 France
 Tel.: +33 3.28.33.28.67
 Fax: +33 3.28.33.28.69
france@scia-online.com

Germany

Scia Software GmbH
 Emil-Figge-Strasse 76-80
 D-44227 Dortmund
 Tel.: +49 231/9742586
 Fax: +49 231/9742587
info@scia.de

Netherlands

Nemetschek Scia bv
 Wassenaarweg 40
 NL- 6843 NW Arnhem
 Tel.: +31 26 320 12 30
 Fax: +31 26 320 12 39
info@scia.nl

Slovakia

Nemetschek Scia s.r.o.
 Topol'ová 8
 SK - 010 03 Žilina
 Tel.: +421 415 003 070-1
 Fax: +421 415 003 072
info@scia.sk

Switzerland

Nemetschek Scia Switzerland
 Dürenbergstr. 24
 CH-3212 Gurmels
 Tel.: +41 26 341 74 11
 Fax: +41 26 341 74 13
info@scia.ch

UAE

Nemetschek Scia Middle East
 Dubai Silicon Oasis HQ Building
 P.O. Box 341041, Dubai, U.A.E.
 Tel.: +971 4 5015744
 Fax: +971 4 5015777
uae@scia-online.com

USA

Nemetschek Scia North America
 7150 Riverwood Drive
 Columbia, MD (USA)
 Tel.: +1 443-542-0638
 Fax: +1 410-290-8050
usa@scia-online.com

Table of contents

Table of contents	4
1. Introduction	5
1.1 Welcome.....	5
1.2 System Requirements	5
2. Standalone installation.....	7
2.1 Installation of Scia Engineer.....	7
2.2 Start Scia Engineer.....	10
2.2.1 Scia Engineer will start.....	10
2.2.2 Scia Engineer will not start immediately.....	11
2.2.3 Update.....	12
2.3 Upgrade of dongle	12
2.4 Use more dongles together	13
3. Uninstalling Scia Engineer.....	14
3.1 Uninstalling with Add/Remove Programs in Windows.....	14
3.2 Uninstalling without Add/Remove Programs	16
4. Troubleshoot	17
4.1 Language module not found.....	17
4.2 Import licence file is not possible	17
4.3 User Access Control	19
4.4 Scia Engineer 2013 on Windows 8.....	19

1. Introduction

1.1 Welcome

Welcome to the Scia Engineer Installation Guide. Scia Engineer is a calculation program running under Windows XP/Vista/Windows 7 with a large range of application: from the check of simple frames to the advanced design of complex projects in steel, concrete, wood...

The program treats the calculation of 2D/3D frames, including the profile check and the connection check for steel constructions. Apart from frames, it is also possible to dimension plate structures, including advanced concrete calculations.

This manual describes the procedures for a correct installation of the application with a standalone protection

The text is concluded with the de-install procedure in chapter three and the most common troubleshoots in chapter 4.

1.2 System Requirements

To install Scia Engineer it is recommended that your system qualifies the following requirements:

Hardware

Processor	Pentium IV - 3Ghz (Advised: CoreDuo2 3 Ghz and higher)
RAM	2 GB (Advised: > 4 GB)
Graphics Controller	256 MB, supporting OpenGL
Disk space for installation, projects and temporary files	5GB
Minimum resolution	1280 x 800

Software

Scia Engineer on Macintosh To run the Scia Engineer software on Mac OS X virtualization software has to be used. Parallels Desktop 7 is recommended for this. When Parallels Desktop 7 is used, a Windows operating system may be installed as a virtual machine and Windows applications are used alongside Mac OS X applications. In this way, the user has 2 operating systems at the same time.

Standalone protection

Windows XP 32 bit
 Windows Vista 32/64 bit
 Windows 2003 server 32 bit
 Windows 2008 server 64 bit
 Windows 2012 server 64 bit
 Windows 7 32/64 bit
 Windows 8 32/64 bit

It is advised to install the latest Service Pack for these Operating Systems.

Floating protection

Windows XP 32 bit
 Windows Vista 32/64 bit
 Windows 2003 server 32 bit
 Windows 2008 server 64 bit
 Windows 2012 server 64 bit
 Windows 7 32/64 bit
 Windows 8 32/64 bit

It is advised to install the latest Service Pack for these Operating Systems.

Allplan Scia Engineer 2013 is compatible only with:

Allplan 2009.0
 Allplan 2011.1
 Allplan 2012.0
 Allplan 2013.0
 Allplan Precast 2010.0

However one should first install Allplan and then Scia Engineer, otherwise the proper installation for the Allplan patch won't be recognised.

Revit Scia Engineer 2013 is compatible only with Revit 2013

The Revit link is available on
www.nemetschek-scia.com/revit

Etabs Scia Engineer 2013 is compatible with Etabs 9.2

IFC Scia Engineer 2013 is compatible only with IFC version 2x3

SDNF Scia Engineer 2013 is compatible only with Version 2.0 and Version 3.0

Tekla Scia Engineer 2013 is compatible only with Tekla version 15, 16, 17, 18 and 19.0 – 32bit

On 32bit OS as well as on a 64bit OS.

2. Standalone installation

2.1 Installation of Scia Engineer

1. You can start the installation using the web setup from our site:

Go to our download page:

<http://update.nemetschek-scia.com/>

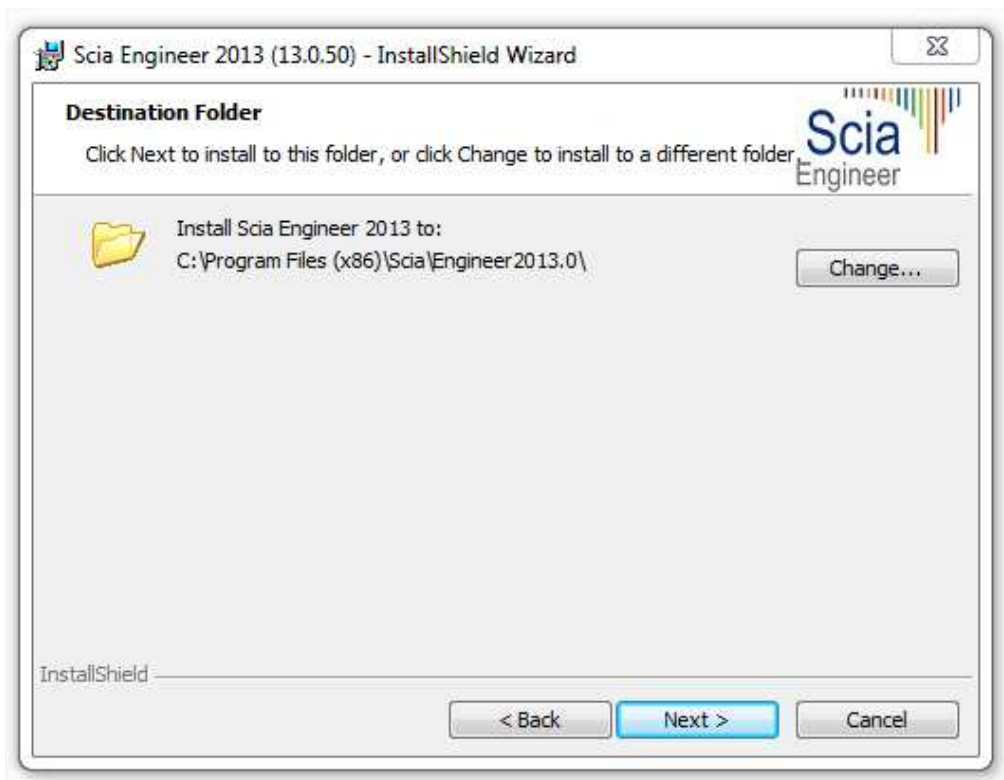
And run the web setup.

2. In the dialog box which appears, select the language for installation:



The language chosen for installation is also the default language that will be used for the help files of Scia Engineer.

3. The Welcome screen for installation appears. Press **[Next]** to continue.
4. In the dialog **Customer Information** the User Name and Company Name can be inputted. The Company Name will appear automatically in the document of Scia Engineer. Press **[Next]** to continue.
5. In the dialog **Choose Destination Location** the folder where the files will be installed can be specified. By default the destination folder is created in Program Files. It is advised to use this default location.



Press **[Next]** to continue.

6. In the dialog **Setup Type** the preferred setup can be chosen. Press **[Next]** to continue.

Note

When choosing a “Typical installation”, NOT all language modules will be installed, only the English language and the language chosen for installation. If you wish to install other languages, it is needed to choose a Custom install where multiple languages can be selected.

To be able to choose another language for the environment of Scia Engineer two requirements need to be met:

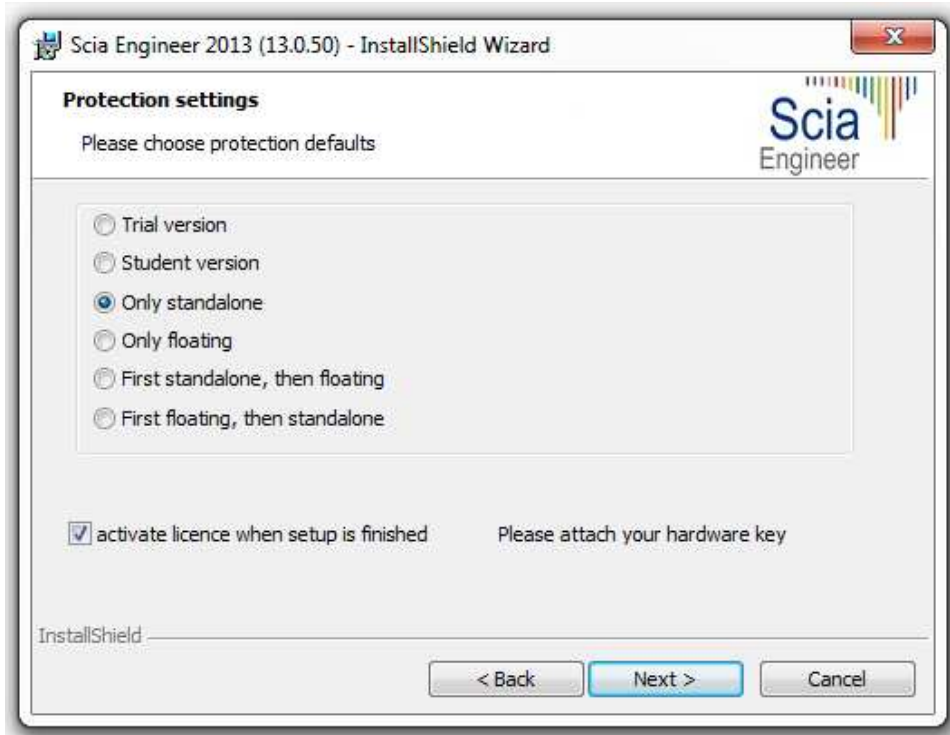
The preferred language needs to be installed

The necessary language module needs to be active in the dongle or on the server

If you want to install one of the Scia Engineer Plug-ins, then you need to select the plug-in in the Custom installation.

The following plug-ins are available: Tekla Structures plug-in, Revit Structure plug-in, CADS RC Link Designer, BS2000, Pipeline Wizard, Composite Beam, Composite Column, Arcelor Mittal-Cellular beams.

7. In the dialog **Protection Defaults** the default values for the protection settings can be set.



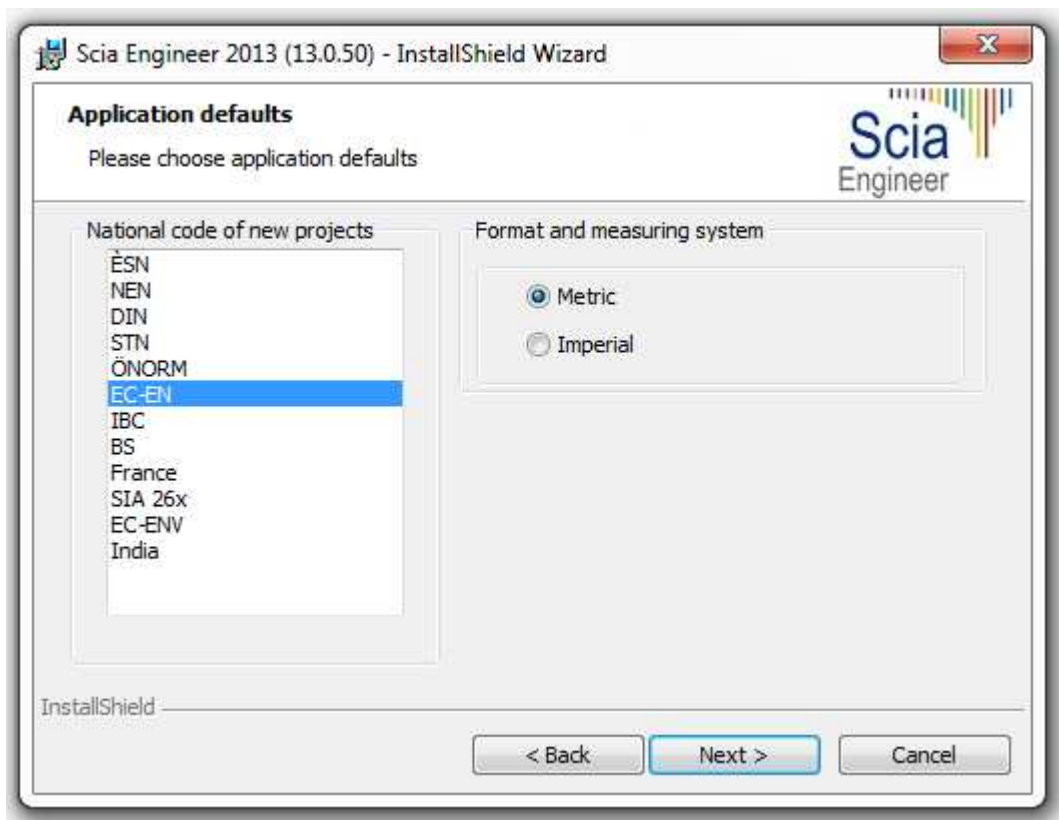
- Activate **Only standalone**.
- Activate the option **activate licence when setup is finished**. With this option the license file will be updated automatically if the dongle is attached to the computer.
- If you don't have your dongle attached to the computer, just install the program and deactivate the option **activate licence when setup is finished**.

Press **[Next]** to continue.

 **Note**

When using a dongle and a FlexNET network license, then the options 'First standalone, then floating', or 'First floating, then standalone' can be chosen.

8. In the dialog **Application Defaults** the default values for the national code can be set.



Choose the default setting for your national code and measuring system. Press **[Next]** to continue.

9. The last window shows an overview of the selected settings. Press **[Install]** to start the installation process.
10. After installation, the message appears that Scia Engineer has been installed successfully. Press **[Finish]** to end the installation procedure.

2.2 Start Scia Engineer

Double click on the **Scia Engineer 2013.0** symbol to start the program.

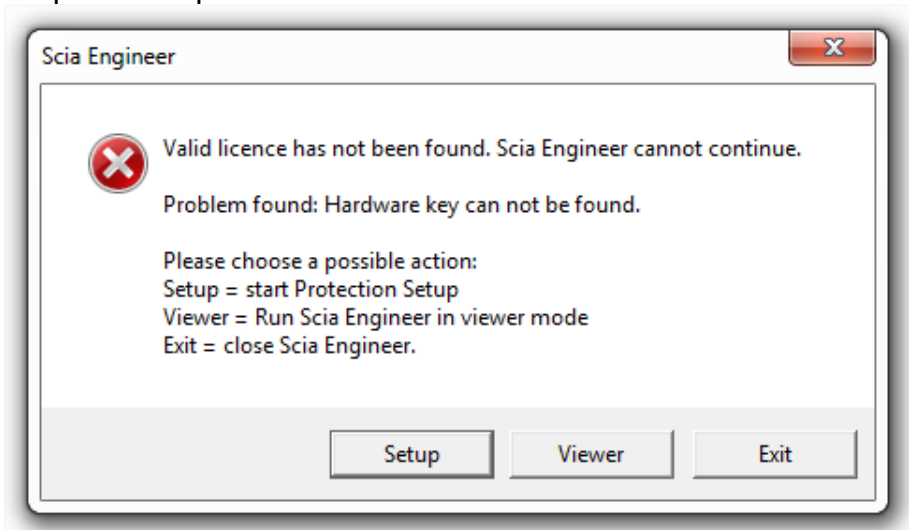


2.2.1 Scia Engineer will start

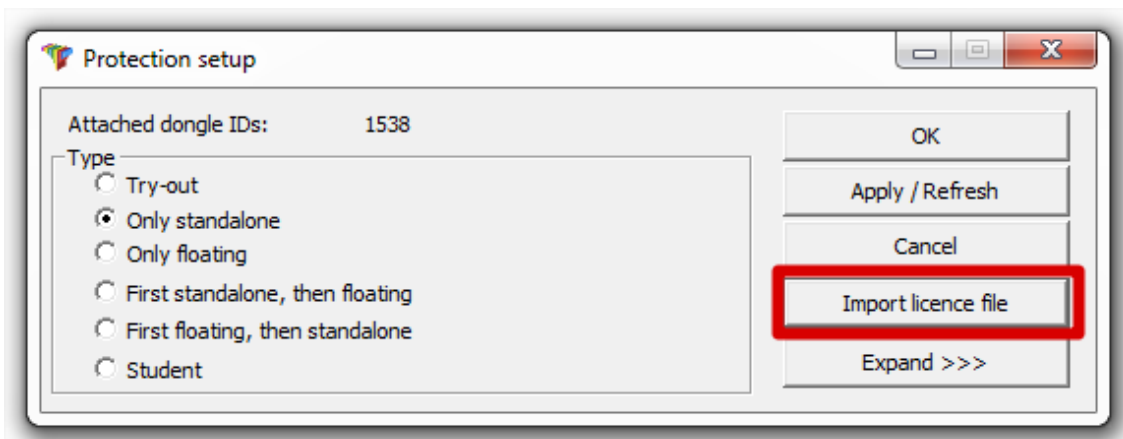
When the protection has been updated successfully, Scia Engineer will start up and the installation is finished.

2.2.2 Scia Engineer will not start immediately

Otherwise the following screen will appear and the steps below have to be followed to update the protection:

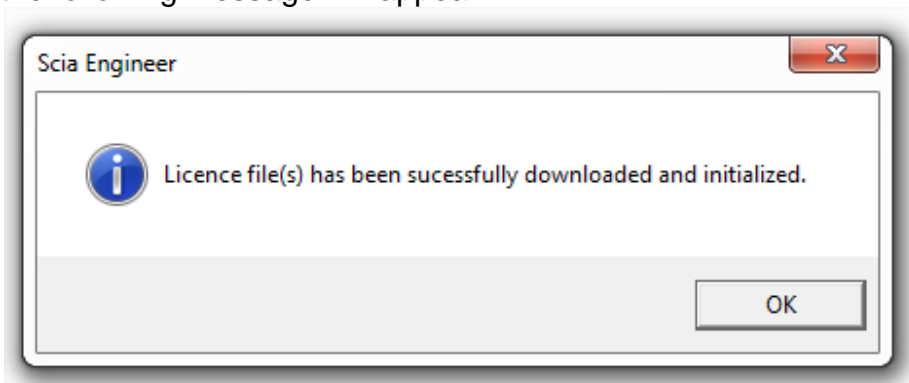


1. Scia Engineer cannot start without a correct protection. Press **[Setup]** to run the protection setup to update the protection.
2. The Protection setup will be displayed



Activate the option **Only standalone** and click on **Import licence file**.

The licence file will be downloaded automatically from the Scia Protection server and the following message will appear:



Press **[OK]** again to close this message.

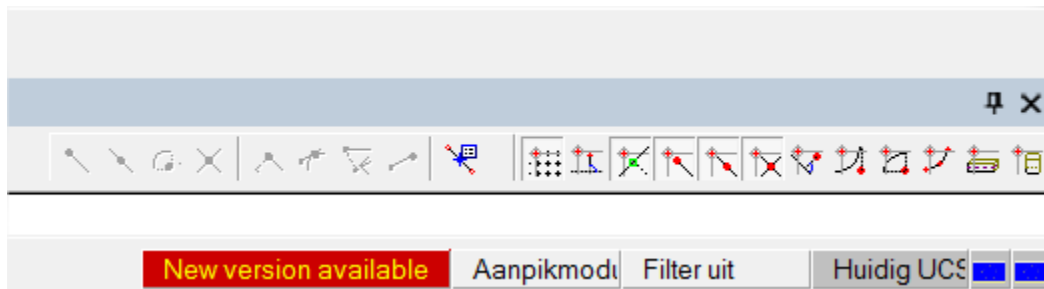
3. Once the licence file has been successfully imported, the user can see the list of his commercial modules in the “Expand” mode of the Protection setup.
4. Press **[OK]** again to close the Protection setup.
5. Normally Scia Engineer 2013.0 will start up automatically. If the program does not start, double click on the **Scia Engineer 2013.0** symbol to start the program.



6. When the protection update succeeded Scia Engineer will start up and the installation is finished.

2.2.3 Update

When an update is available, you can see a notification at the right bottom corner in Scia Engineer itself:



And when you click on **New version available** you can choose for “Install update” and the updates will be installed automatically.

In Scia Engineer it is also possible to check if an update is available, using **Help -> Check for update** in Scia Engineer.

It is possible to disable this option in the registry on the client’s computer:

```
HKEY_CURRENT_USER\Software\SCIA\Esa\10.1\Admin\Settings\EnableUpdateMenu
= 0
```

2.3 Upgrade of dongle

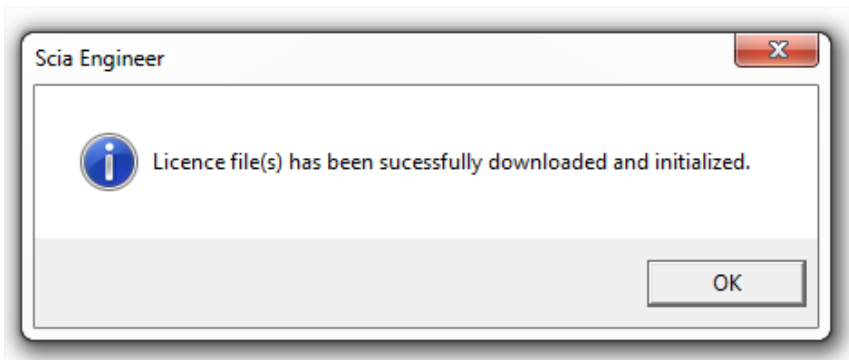
An update of the standalone protection means the replacement of the license file. This update is necessary

- a) if a new version/patch of Scia Engineer will be installed
- b) if the number of licenses for individual modules has changed

c) if new modules have been purchased

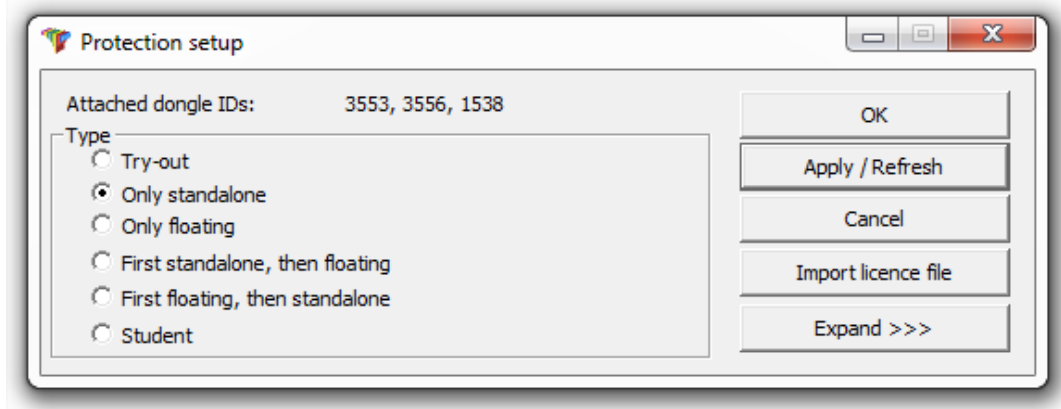
To update the licence file:

1. Open the **protection setup** (in Windows at “Start > All programs > Scia Engineer 2013.0 > Protection setup”)
2. Click on [**Import licence file**] in the Protection setup dialogue.
3. Following message will appear after successful update of Licence file.



2.4 Use more dongles together

It is possible to use as many dongles as can be attached to the computer together. The LockID numbers of all attached dongles are displayed in the protection setup dialogue:



In the list of available commercial modules is displayed the sum of modules from LIC files related to all attached dongles. Finally the sum of modules from LIC files related to all attached dongles can be used in Scia Engineer.

Note

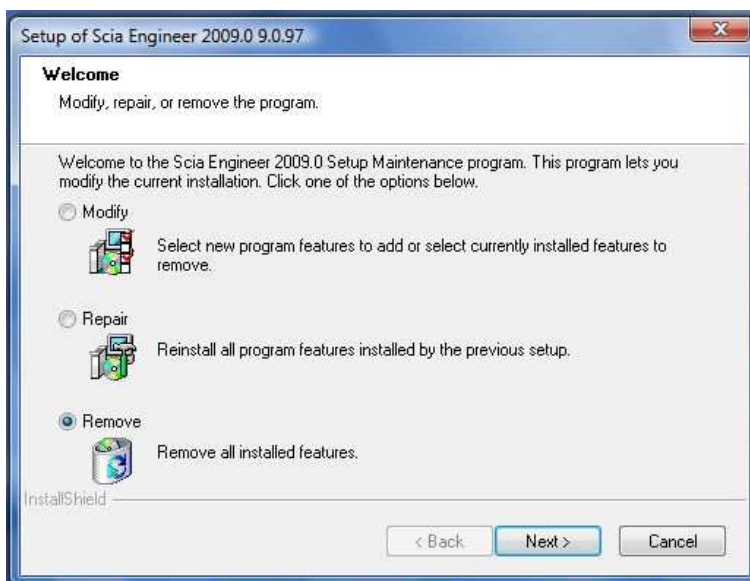
[Import licence file] can be done with more attached dongles. It is possible to use more dongles with different time limitation. In case that some commercial module is in all LIC files, the one with longer time limitation is taken into account.

3. Uninstalling Scia Engineer

3.1 Uninstalling with Add/Remove Programs in Windows

Scia Engineer can be uninstalled like any other windows based software application:

1. Go to **Add or Remove Programs** through **Start > Settings > Control Panel > Add or Remove Programs**.
2. A list with installed software applications will appear. Select Scia Engineer and press **[Change/Remove]**
3. In the dialog box that appears choose the option **Remove**



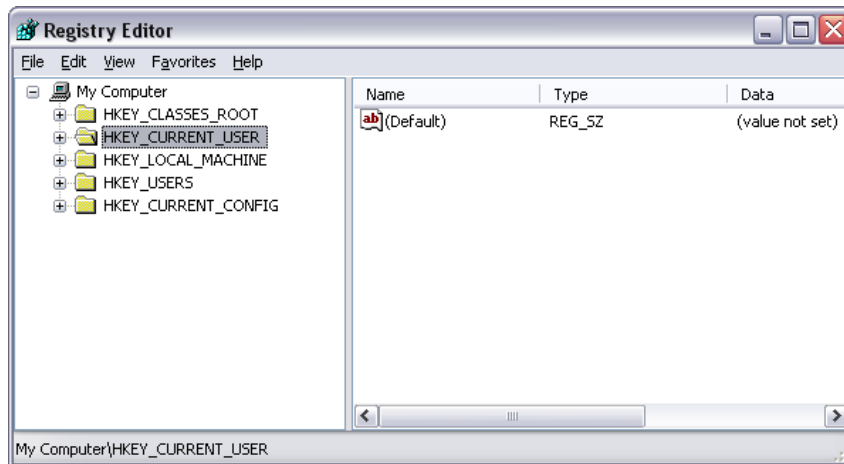
4. Press **[Next]** to start the uninstall procedure.

After completing the uninstalling, some settings remain in the Registry of windows. These traces can be deleted manually. Deleting these entries can be necessary when problems occur with a new installation.

1. Open the **Run** dialog box through **Start > Run**
2. Type **regedit** and press **[OK]**

Take note, for this step it is required to have at least Power-User rights!

3. The **Registry Editor** appears.



4. Go to the following key's and delete them using the **Delete** button.

HKEY_CURRENT_USER\Software\SCIA\ESA*
 HKEY_LOCAL_MACHINE\Software\SCIA\ESA*
 Where * represents the version number.

5. Close the **Registry Editor** through **File > Exit**

After completing the uninstalling, some folders remain on your hard disk and can be deleted manually:

32 bits computer: C:\Program Files\SCIA\ESA**

64 bits computer: C:\Program Files (x86)\SCIA\Engineer**

Also the following folders remain on your hard disk and can be deleted:

Windows XP: C:\Documents and Settings\#USER#\ESA**

C:\Documents and Settings\#USER#\My Documents\ESA**

Windows Vista and Windows 7: C:\Users\#User#\Esa**

C:\Users\#User#\Documents\Esa**

Where ** represents the version number

Attention

These folders can be deleted using Windows Explorer. Please note that the first folder can contain projects so the user must be absolutely sure if he/she wishes to delete these folders.

3.2 Uninstalling without Add/Remove Programs

Sometimes Scia Engineer cannot be uninstalled using “Add/Remove programs” of Windows. Sometimes this give an error message or Scia Engineer is not added to Add/Remove Programs. This way, it is not possible to uninstall the software.

This problem can occur with every Windows based program.

To easily uninstall Scia Engineer, use the following procedure:

Go to ‘Start’ -> ‘Run’

In the dialog that appears, type the following command:

```
msiexec /x {8BF90233-A9C2-41D1-BEEA-A391BE0F15FD}
```

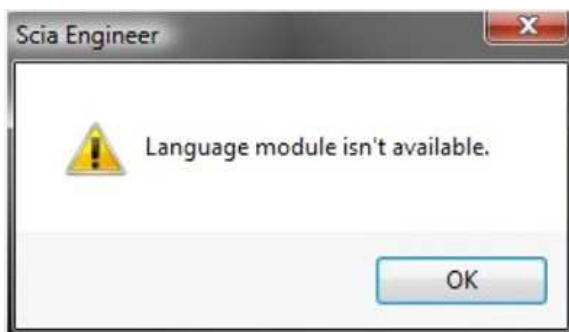
This will execute the same procedures as uninstalling through Add/Remove Programs.

4. Troubleshoot

A complete list of Frequent Asked Questions can be found on our website:
<http://nemetschek-scia.com/en/support/faq>

4.1 Language module not found

When starting up Scia Engineer the following message appears:



If this message appears, it means that Scia Engineer does not find the correct language to start up.

To use a certain language, you need the module for this language and you have to install this language. Probably you have chosen a different language during your installation then the language of your modules.

You can install an extra language in the setup for “Programs and Features” in Windows. Select Scia Engineer 2013 here and choose for “Change”. With this option you can change the installation of the program and select an extra language which will be installed.

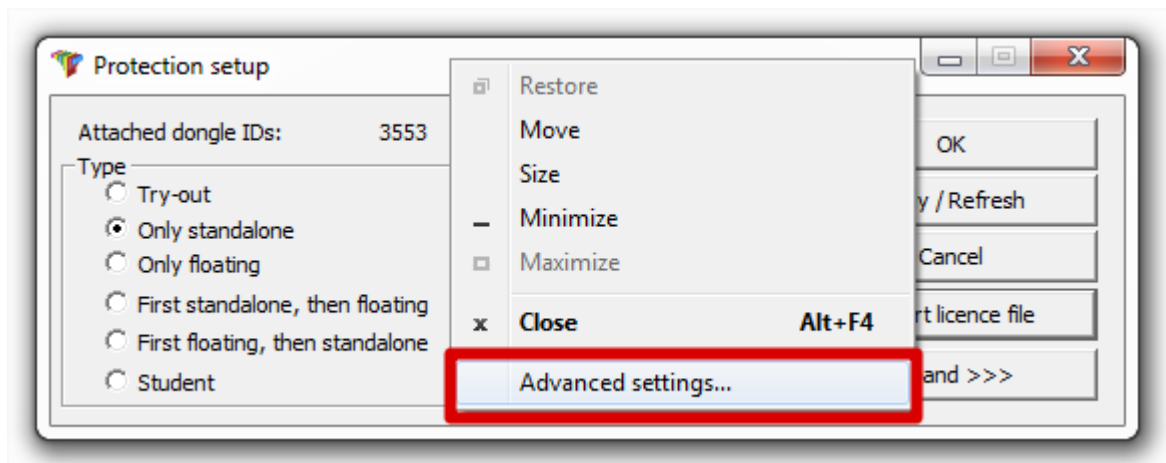
4.2 Import licence file is not possible

With the option “Important licence file” the Protection setup will search your file on the internet via TCP port 80 and copy this into a folder on the computer.

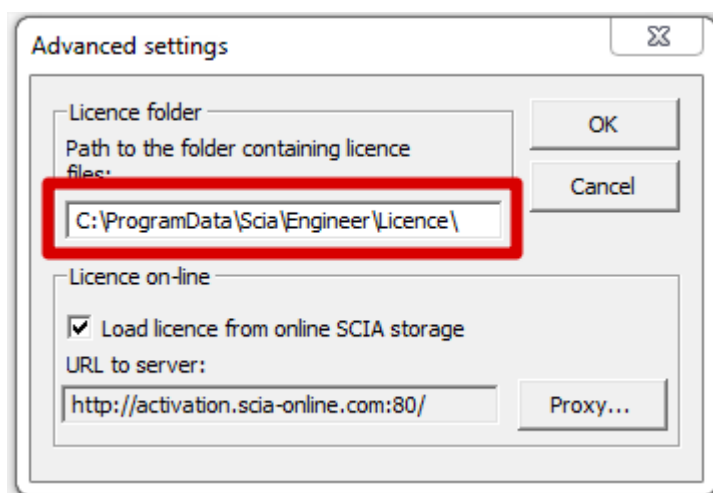
Automatic import of LIC file from the Scia protection server is possible when the dongle is attached to the computer and when internet connection is available.

Import of LIC file can be done only if the user has writing rights on the installation folder for the licence file.

It is possible to change the path to the folder where the licence file will be imported by right-mouse button clicking on the header of Protection setup dialogue:



Choose here for [Advanced settings...]



And here the path to the folder containing the licence file can be adapted.

When using an edition and dynamic packet of Scia Engineer you will find next to the SCIAxx.lic-file also a SCIAxx.e2c-file. In this case you have to take care that both files are stored in the same folder when importing the license file.

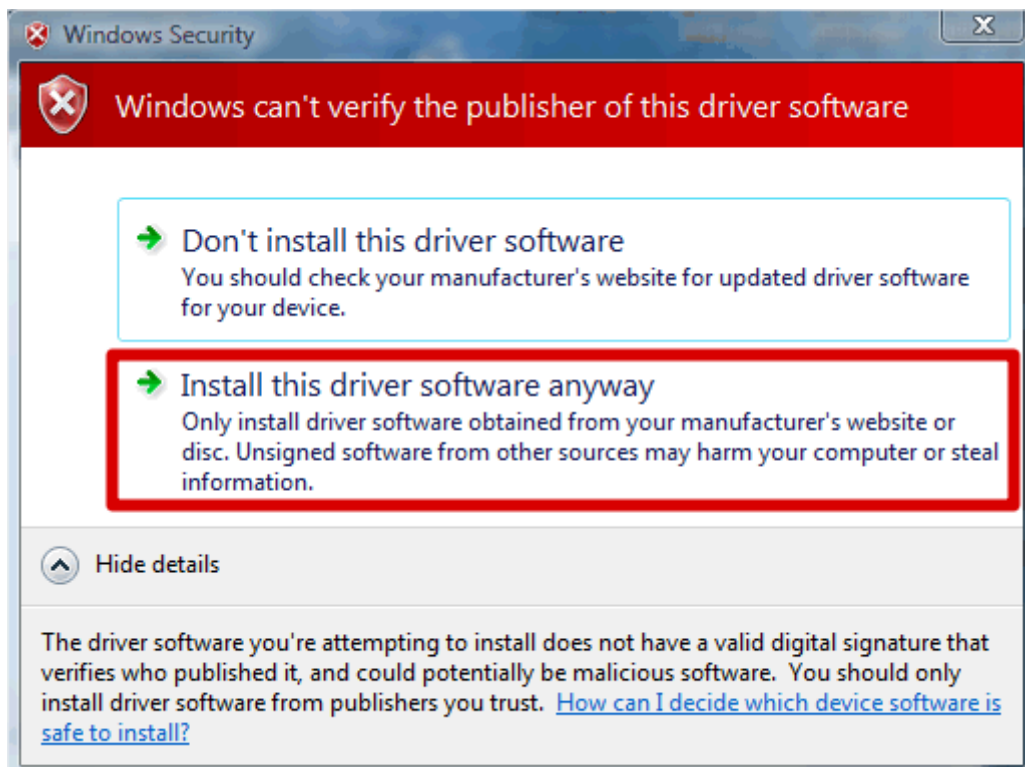
With the option “Import licence file”, the Protection Setup will make a copy of your licence file and copy it into the folder described above. By default this folder is: C:\ProgramData\Scia\Engineer\Licence\

When the protection setup gives an error message when clicking on “Import licence file”, you can copy the licence file into this folder manually. After clicking on “Apply/Refresh” the licences will be found and you can work with Scia Engineer 2013.

If you don't have your latest licence file, you can send us an email on support@scia-online.com to ask for your licence files and we will send the files to you.

4.3 User Access Control

If UAC (User Access Control) is enabled the following message will appear at the end of the installation:



Choose “Install this driver software anyway” to end the installation.

Note

For using Scia Engineer, standard user rights suffice. Here, no Administrator rights are needed.

However, the user must have read/write permission for the user folder of Scia Engineer:

Windows XP: C:\Documents and Settings\#USER#\ESA**

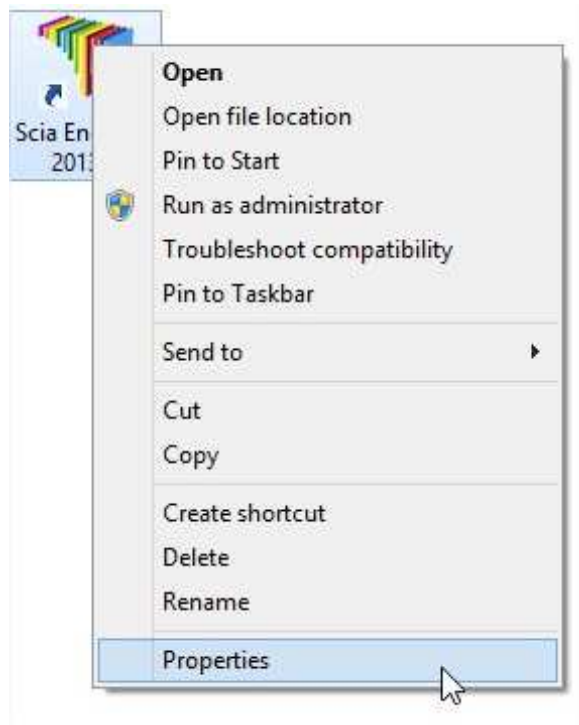
Windows Vista, Windows 7: C:\USERS\#USER#\ESA**

Where ** represents the version number and #USER# represents the user login name

4.4 Scia Engineer 2013 on Windows 8

If Scia Engineer 2013 does not start correctly on Windows 8, you can try to run it in compatibility mode on Windows 7 as follows:

1. Right click on the Scia Engineer 2013 icon and choose for **Properties**



2. Go here to the tab “Compatibility”
3. And activate the option “Run this program in compatibility mode for:” and choose for “Windows 7” just below it:

